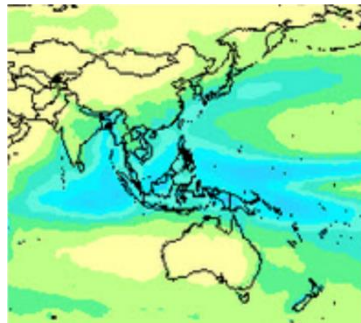


Demystifying Climate Change Science with SimCLIM

Apply tools using the latest data of the Intergovernmental Panel on



Do you want to know how GLOBAL Climate Change is effecting your LOCAL situation?

Does sea level rise play an important role in your planning?

Do you want to assess impacts and risks from climate change using cutting-edge scientific models?

If yes, this is for you!

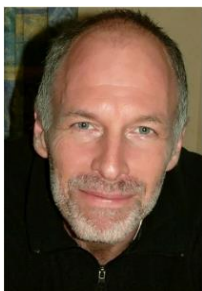
CLIMsystems Ltd is excited to host three-day workshops in two cities in New Zealand and a one-day introductory presentation in Melbourne in Australia with Dr. Peter Kouwenhoven, our senior scientist on climate change.

ABOUT THE WORKSHOP

Climate change is now recognised as an important issue to be considered across sectors such as infrastructure, agriculture, water resources, biodiversity and disaster risk management. It certainly is one of this century's greatest destabilizing forces which undermines economies and threatens our health and wellbeing.

This workshop will show you how to use the latest global climate change data for climate projections including sea level rise and extreme event analysis for different emission scenarios. The power to model past and future climate is in your hands!

WHO IS PETER KOUWENHOVEN?



Dr. Peter Kouwenhoven is a Senior Scientist with CLIMsystems Ltd. He has worked on models on every scale from microscopic organisms to global climate models, many topics around ecology, hydrology, sedimentation, pollution, eutrophication and air traffic, applications about risk assessment, adaptation and planning, at different timescales. He is especially interested in sea level rise.

SimCLIM 2013 is a Windows-based software package designed to facilitate climate risk and adaptation assessments for consultants, policy makers, academics in non-governmental and governmental organisations, that:

- Presents climate data in transparent formats that are easily understood
- Applies scientifically robust methods with the latest CMIP5 data, based on IPCC guidelines, and supported by an expert panel of climate science advisors
- Generates maps, graphs and charts of various aspects of climate change spatially and for sites, cities, counties, provinces, nations and the world
- Exports to GIS programs such as ArcGIS, while tabular data can be quickly exported to Excel for further analysis and graphing

WHERE AND WHEN

LOCATION	DATE
Melbourne overview)	October 27 th , 2014 (introductory
Hamilton	November 25 th to 27 th , 2014
Wellington	March 17 th to 19 th , 2015

Contact Clare Wimmer for registration and queries: clare@climsystems.com