



PERMACULTURE
IN NEW ZEALAND

Designing and Educating for Climate Change in New Zealand

SimCLIM is a software tool that uses the latest IPCC global climate data to create models and look at trends to help a wide range of industries understand the risks resulting from climate change. Users can create different scenarios to simulate the effects of climate change at a city or regional level right up to a global scale. CLIMsystems has partnered with the International Global Change Institute (IGCI), seeking to collaborate with Permaculture in New Zealand Members to develop an application that can let educators and designers use New Zealand data in their teaching/designing practice.

We hope to share a vision of co-creating climate change science educational tools through networking and building relationships with environmental educators, permaculture educators/designers and IT companies. Which is why CLIMsystems is offering their flagship product (SimCLIM) to you to start the conversation, free of charge for two months for your professional development and in collaboration of creating new tools for exploring opportunities posed by climate variability.



CLIMsystems

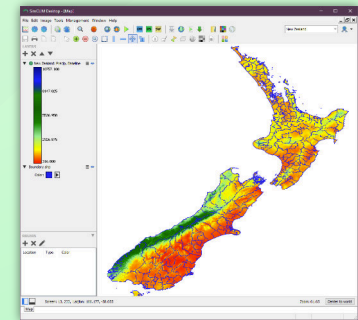
Sign-up at: 

<http://climsystems.com/design-and-educate/>

Contact: clare@climsystems.com



- complete standalone tool for assessing effects, impacts and risks of climate resilience using cutting-edge scientific models
- uses latest IPCC CMIP⁵ global climate data results for climate and sea level rise
- does extreme event analysis for current and future climate scenarios
- links with external tools (like ArcGIS, Excel)
- is essential for complete and robust climate change analysis
- global and New Zealand country-wide data provided for free, NZ regional study areas can be purchased and are fully interchangeable with the SimCLIM Climate for ArcGIS



Sign-up at: 

<http://climsystems.com/design-and-educate/>

Contact: clare@climsystems.com