



### IT Climate Change Tools to support Environmental Education in New Zealand

SimCLIM is a software tool that uses the latest IPCC global climate data to create models and look at trends to help a wide range of industries understand the risks resulting from climate change. Users can create different scenarios to simulate the effects of climate change at a city level right up to a global scale. CLIMsystems has partnered with the International Global Change Institute (IGCI), seeking to collaborate with NZAEE members to develop an application that can let environmental educators use New Zealand data in their teaching practice.

We hope to share a vision of co-creating climate change science educational tools through networking and building relationships with environmental educators, permaculture educators and IT companies. Which is why CLIMsystems is offering their flagship product to you to start the conversation, free of charge for one year for your professional development and in collaboration of creating a new tool.



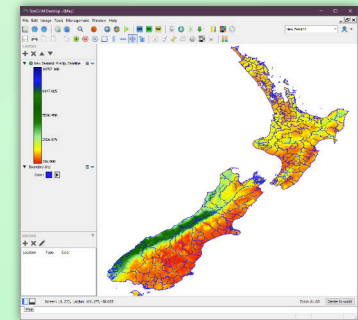
Sign-up at: 

<http://climsystems.com/design-and-educate/>

Contact: [clare@climsystems.com](mailto:clare@climsystems.com)



- complete standalone tool for assessing effects, impacts and risks of climate resilience using cutting-edge scientific models
- uses latest IPCC CMIP<sup>5</sup> global climate data results for climate and sea level rise
- does extreme event analysis for current and future climate scenarios
- links with external tools (like ArcGIS, Excel)
- is essential for complete and robust climate change analysis
- global and New Zealand country-wide data provided for free, NZ regional study areas can be purchased and are fully interchangeable with the SimCLIM Climate for ArcGIS



Sign-up at: 

<http://climsystems.com/design-and-educate/>

Contact: [clare@climsystems.com](mailto:clare@climsystems.com)